

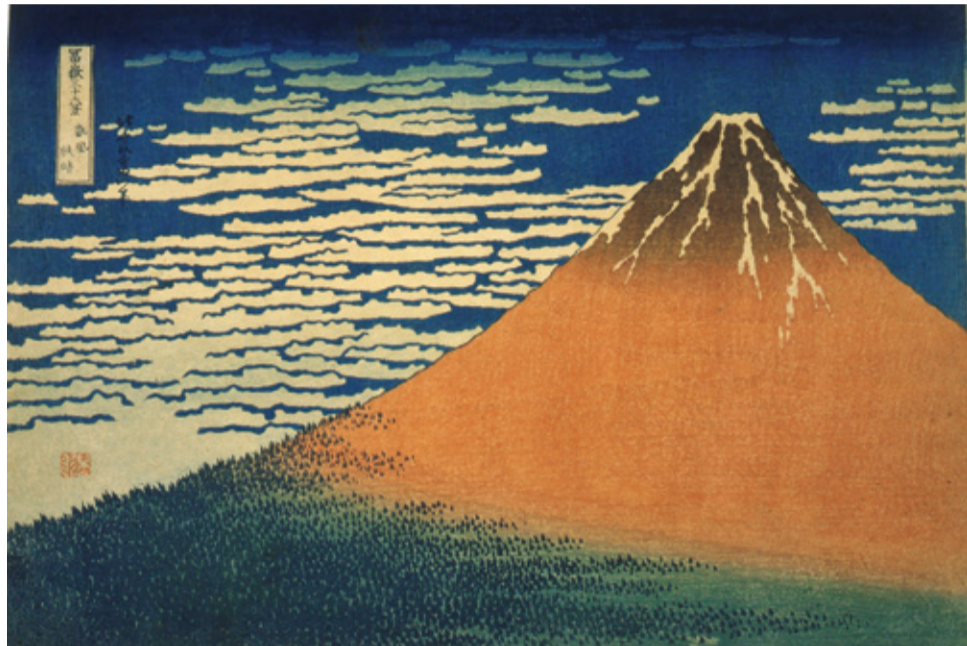


Special Exhibition

# The Mount Fuji Challenges:

## Hokusai and Hiroshige

Saturday, April 24 to Sunday, June 20, 2021  
Special Exhibition Gallery, 1F



South Wind, Clear Sky, also known as Red Fuji, from the series *Thirty-six Views of Mount Fuji*  
Katsushika Hokusai, c. 1831-33

Our museum has held many exhibitions of ukiyo-e, an iconic aspect of Edo culture. This time we are taking a new approach: a special exhibition, displaying only works from the collection, entitled *The Mount Fuji Challenges: Hokusai and Hiroshige*.

The leading figures in this exhibition are two rival geniuses in landscape painting, Katsushika Hokusai (1760-1849) and Utagawa Hiroshige (1797-1858). This awe-inspiring display of ukiyo-e includes masterworks by both artists.

### Highlights, 1 An Innovative Hokusai and Hiroshige Exhibition Viewing Works as a Story

The story begins with a painting, *The Pine Grove at Miho*, that Utagawa Hiroshige (then Andō Tokutarō) painted when he was ten years old. Tokutarō's dream was to become good at painting. He was born into a samurai-class family, but, to make his dream come true, he became an apprentice to Utagawa Toyohiro. But standing in his way was a towering competitor: the artistic genius Katsushika Hokusai.

In Section 1, we explore a large group of works by Hokusai, dating from his late twenties to his sixties. Section 2 presents Hokusai's *Thirty-six Views of Mount Fuji*, a series that Hiroshige probably viewed with astonishment. Section 3 begins with *Fifty-three Stations of the Tōkaidō Road*, a series published when Hiroshige was in his late thirties. Through his highly individual depictions of famous places, Hiroshige was growing into a painter who made landscapes the core of his work. The final section presents the images of Mount Fuji that Hiroshige produced after Hokusai's death. In them we can glimpse Hiroshige's competitive spirit and unceasing willingness to take up challenges.



Painting, *The Pine Grove at Miho*  
Andō Tokutarō (Utagawa Hiroshige), 1806

### Highlights, 2

#### Hokusai's *Thirty-six Views of Mount Fuji* — All Forty-six on Display!

Hokusai's *Thirty-six Views of Mount Fuji* are beloved by people throughout the world; they have become the works of art that symbolize Japan. Indeed, these pictures are becoming ever more familiar to people in Japan as well, with *Under the Wave off Kanagawa*, also known as the Great Wave, scheduled to be used on the back of the new thousand yen note starting in fiscal 2024.

### Highlights, 3

#### It's Really Amazing: The Edo-Tokyo Museum Collection

The works of art and related materials in this exhibition are all from the museum's collection. The *Thirty-six View of Mount Fuji* and *Fifty-three Stations of the Tōkaidō Road* series, *The Pine Grove at Miho*, a painting Hiroshige never parted with, and his beloved tobacco pouch and other artifacts are all of great significance. Moreover, opportunities to see these series of work in one setting are quite rare, yet as a body they cannot be overlooked in any discussion of ukiyo-e.

This exhibition is an attempt to bring to the fore how boldly both Hokusai and Hiroshige took up the challenge of the landscape picture. Please enjoy the fruits of their daring and determination—a plentitude of masterpieces.

(Koyama Shūko, Curator)



Hara: *Mount Fuji in the Morning*, from the series *Fifty-three Stations of the Tōkaidō Road*  
Utagawa Hiroshige, c. 1834-36

### Information

**Opening hours:** 9:30 am to 5:30 pm (Saturdays until 7:30 pm) \*Admission until 30 minutes before close

\*The opening hours may change. Please check the Edo-Tokyo Museum website for the latest information.

**Days Closed:** Mondays (but open April 26, and May 3)

**Organized by:** Tokyo Metropolitan Foundation for History and Culture The Tokyo Metropolitan Edo-Tokyo Museum, The Asahi Shimbun

Admission fee (incl. tax)	Special exhibition only	Special and permanent exhibition	Advance tickets for special exhibition only
Adult	¥1,000 (¥800)	¥1,280 (¥1,020)	¥800
University/college students	¥800 (¥640)	¥1,020 (¥810)	¥640
Middle and high school students, Seniors 65+	¥500 (¥400)	¥640 (¥510)	¥400
Tokyo middle and elementary school students	¥500 (¥400)	None	¥400

### Notes

- Fees in parentheses are for groups of twenty or more.
- The admission fee is free in the following cases. Preschool children. Anyone who has a physical disability certificate, intellectual disability certificate, rehabilitation certificate, mental health and welfare certificate, or an official designation as an atomic bomb survivor, as well as their attending caregivers (up to two people).
- There is no special exhibition & permanent exhibition ticket for elementary school students and junior high school students who live or study in Tokyo because the permanent exhibition admission fee is free for them.
- Advance tickets will be on sale between Tuesday, May 2 and Friday, April 23, at the Edo-Tokyo Museum ticket office.

Featured Exhibition

# Gifts from the Citizens 2020

## — A selection of new acquisitions in 2019

Tuesday, March 9 to Sunday, May 9, 2021

First rotation: Tuesday, March 9 to Sunday, April 4, 2021    Second rotation: Tuesday, April 6, to Sunday, May 9, 2021

Permanent Exhibition, 5th Floor Feature Exhibition Room \*Items on display may change during the exhibition.



Picture Scroll Depicting a Buddhist Service Hakkō (Eight Lectures on the Lotus Sutra) in the Momijiyama Tōshōgū Shrine  
Mid Edo period

The museum collects artifacts related to the history and culture of Edo and Tokyo and conserves them for future generations. It also conducts research on the various kinds of information that those artifacts carry and presents the results of those studies in its exhibitions and other formats.

This exhibition is an opportunity for visitors to see some of the artifacts the museum has newly acquired. In 2019 and 2020, the museum was able to add many new items to the collection. This exhibition introduces a selection of them, with gratitude to the citizens who donated some of these artifacts.

In 1745, Tokugawa Yoshimune, the eighth Tokugawa shogun, held a lavish 130th Buddhist memorial service for Tokugawa Ieyasu. The gorgeous *Picture Scroll Depicting a Buddhist Service Hakkō* (Eight Lectures on the Lotus Sutra) in the *Momijiyama Tōshōgū Shrine* depicts the processions carried out for Yoshimune and others to take part in that service. *Kurodana Shelf in Black Lacquer with Design of Crane, Turtle, Pine, Bamboo, Plum, and Shippō Tsunagi* (interlocking circles) Pattern with *Aoichōmon Crest in Maki-e* is a piece of bridal furniture to display a woman's toiletries. The *Musui Dokugen* (Musui's Monologue) is a vitally important autobiography by Katsu Kaishū's father Kokichi (1802-1850) in which he describes his lifetime. *Kyōgetsubō* (The Moon-Mad Monk) is a splendid illustrated book of *kyōka* (comic poem) published by

Tsutaya Jūsaburō with five images of the full moon by Kitagawa Utamaro. *Tokyo Sports Center of the Orient* was produced in 1933, when Japan was engaged in bidding to host the Olympics for the first time.

These new acquisitions indicate how remarkably varied the Edo-Tokyo Museum collection is. We invite you to enjoy exploring its world. (Awaya Tomoko, Curator)



*Kurodana Shelf in Black Lacquer with Design of Crane, Turtle, Pine, Bamboo, Plum, and Shippō Tsunagi* (interlocking circles) Pattern with *Aoichōmon Crest in Maki-e*  
c. 1864



*Kyōgetsubō* (The Moon-Mad Monk)  
Kitagawa Utamaro, 1789

### Visitor Information

Please visit our website for the latest information.

#### Hours

9:30 - 17:30

Saturdays 9:30 - 19:30

(Last admission 30 minutes before closing.)

#### Closed

Mondays (When Monday is a national holiday, the next business day)

Year-End and New Year Holiday

#### Admission for Permanent Exhibition

	Individual	Group (20 and over)
Adults	¥ 600	¥ 480
Students*	¥ 480	¥ 380
Ages 65 and over	¥ 300	¥ 240
Junior high** and high school students	¥ 300	¥ 240

\* Includes university and vocational college students

\*\*Free admission for junior high school students resident or studying in Tokyo

#### Free Admission to Permanent Exhibition

- Pre-school and elementary school children
- Junior high school students who are residents of Tokyo
- Those in personal possession of disability certificates, mental disability, psychiatric disability protection and atomic bomb survivor chart holders upon showing of the document (documentary proof of age also required) and their two custodians

#### Silver Day

Admission is free for ages 65 and over on the 3rd Wednesday of each month (documentary proof of age required)

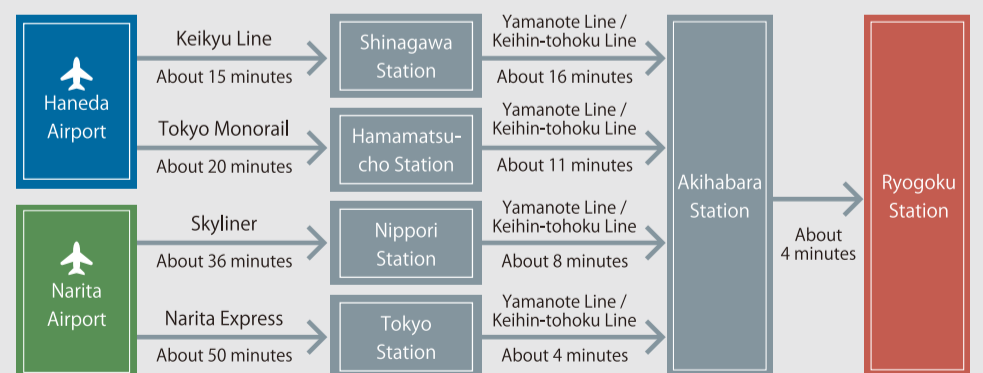
#### Family Day

The admission for two adult custodians (Tokyo residents) who bring children aged below 18 on the 3rd Saturday or the following Sunday (Sunday) will be reduced by half for entrance to the permanent exhibition

A separate admission fee applies to special exhibitions.

### Getting Here

#### From Airports



\* All times from Narita Airport are from "Narita Airport Terminal 2+3 (Airport Terminal 2) Station".

#### by Train by Subway

- 3-minute walk from West Exit of Ryogoku Station, JR Sobu Line
- 1-minute walk from A3 or A4 Exit of Ryogoku Station (Edo-Tokyo Hakubutsukan-mae), Toei Subway O-Edo Line

